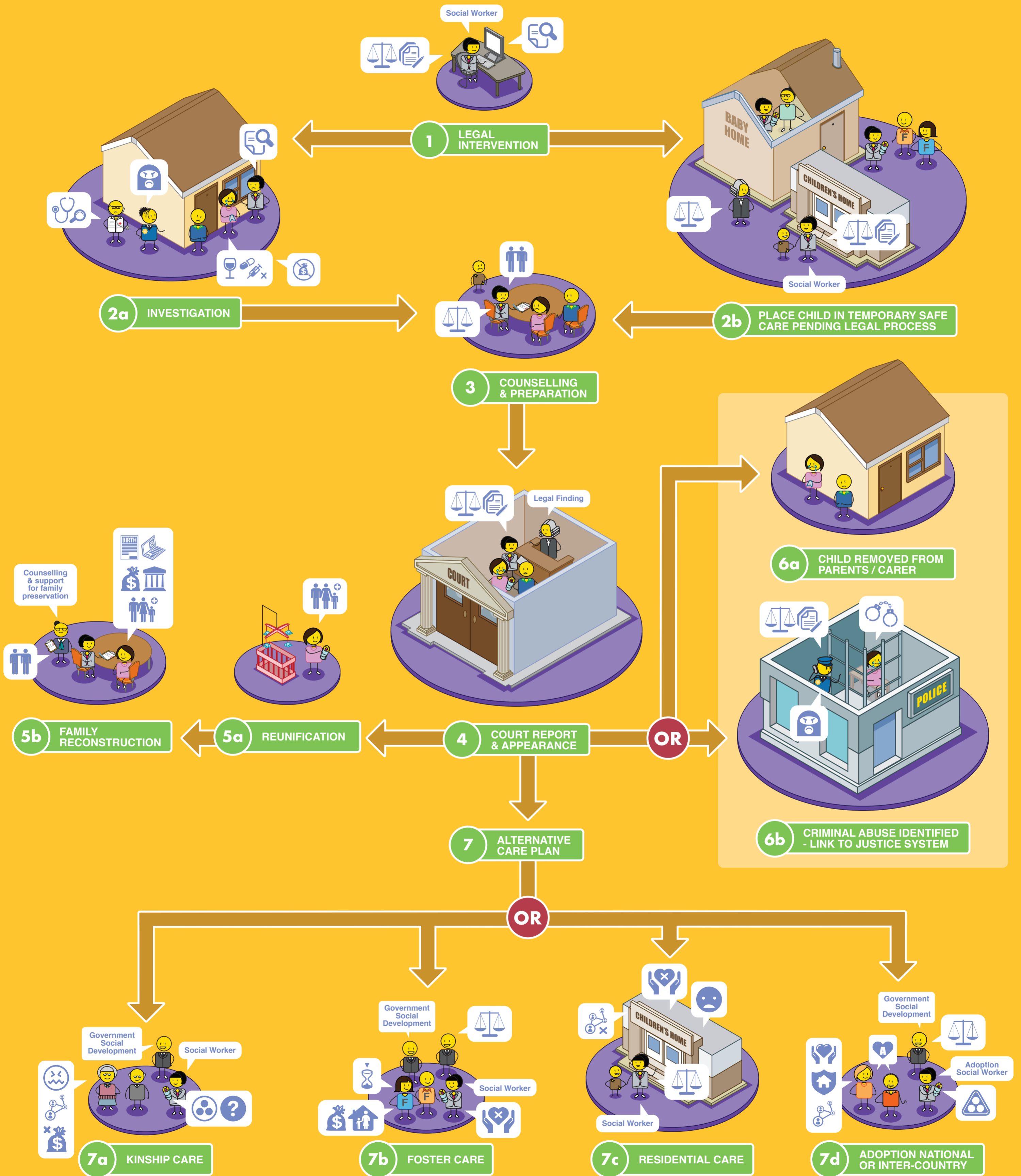


CHILD PROTECTION

Statutory Intervention



Counselling	Role Confusion	Investigate	Legal Document	Family Reunification	Limited / No Bonding / Attachment	Neglected Child	Birth Certificate	Temporary	Biological Parents	Adoptive Parents	Adoption Social Worker	Police	Doctor	Counsellor / Psychologist
Cultural Roots	Drug & Alcohol Abuse	Financial Considerations	Legal Process	Stable Home	Support & Care	Stress	Social Grant	Poverty	Foster Parents	Government Official	Child	Grandparents	Presiding Officer / Judge	
Ancestral Disconnection	Jail	Medical Assessment	Family Belonging	Crime	Foster Care Grant	Adoption	ID Book							

